



# FE8181/81V

## Fisheye Network Camera

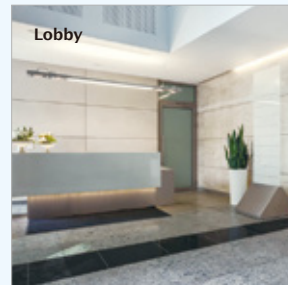
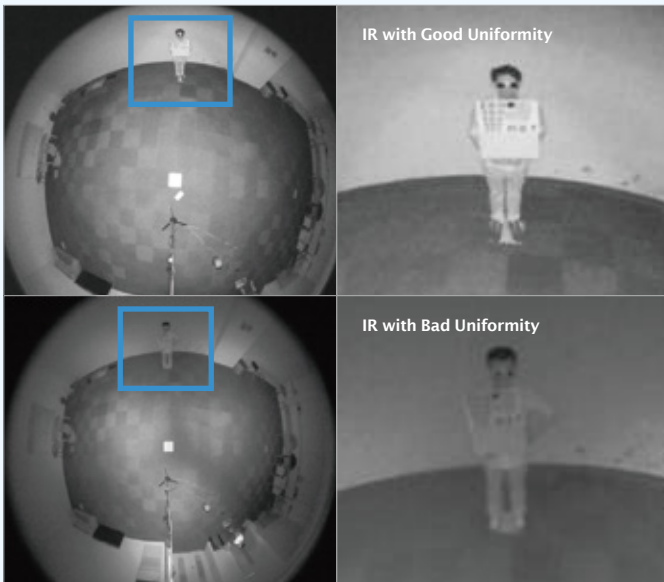
5MP · 360° Surround View · 360° 10 Meter IR · Smart IR · 3DNR · IP66 · IK10 · Pixel Calculator

VIVOTEK FE8181/81V are the latest fisheye fixed dome network cameras from VIVOTEK, featuring a detailed 5-Megapixel resolution sensor with superb image quality. Equipped with a fisheye lens for 180° panoramic view (wall mount) or 360° surround view (ceiling/floor/table mount) without blind spots, the cameras are able to provide coverage of wide, open areas, such as airports, shopping malls, parking lots, retail stores, offices and more.

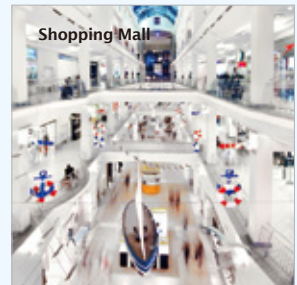
The FE8181/81V, true day/night cameras, feature a removable IR-cut filter, maintaining clear images 24 hours a day, with built-in IR LEDs enabling the camera to provide uniformly 360° surround illumination for clear viewing up to 10 meters, even in completely dark environments.

### Key Features

- 5-Megapixel CMOS Sensor
- 30 fps @ 1080p Full HD
- 1.5 mm Fisheye Lens for 180° Panoramic View and 360° Surround View
- Removable IR-cut Filter for Day & Night Function
- EN50155 Compliance for Professional Mobile Surveillance (FE8181V)
- Real-time H.264, MPEG-4, and MJPEG Compression (Triple Codec)
- WDR Enhancement for Unparalleled Visibility in Extremely Bright and Dark Environments
- Vandal-proof IK10-rated and Weather-proof IP66-rated Housing (FE8181V)
- ePTZ for Data Efficiency
- Built-in 802.3at Compliant PoE
- Built-in MicroSD/SDHC/SDXC Card Slot for On-board Storage
- Pixel Calculator for Image Clarity Measurement
- Support Local Dewarping



Lobby



Shopping Mall



Airport



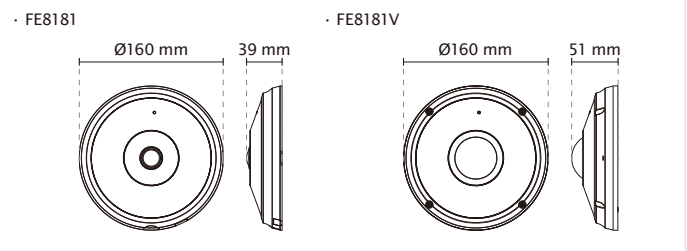
Low Light

## Technical Specifications

Model	FE8181/81V
<b>System Information</b>	
CPU	Multimedia SoC (System-on-Chip)
Flash	128 MB
RAM	256 MB
<b>Camera Features</b>	
Image Sensor	1/2.5" Progressive CMOS in 2560 x 1920 resolution
Maximum Resolution	1920x1920
Lens Type	Fixed-focal
Focal Length	f = 1.5 mm
Aperture	F2.8
Field of View	180° (Horizontal) 180° (Vertical) 180° (Diagonal)
Shutter Time	1/5 sec. to 1/32,000 sec.
WDR Technology	WDR Enhanced
Day/Night	Removable IR-cut filter for day & night function
Minimum Illumination	0.6 Lux @ F2.8 (Color) 0.01 Lux @ F2.8 (B/W) 0 Lux @ IR LED ON
Preset Locations	20
Pan/tilt/zoom Functionalities	ePTZ: 12x digital zoom (12x on IE plug-in)
IR Illuminators	Built-in IR illuminators, effective up to 10 meters IR LED*6
On-board Storage	MicroSD/SDHC/SDXC card slot
<b>Video</b>	
Compression	H.264, MJPEG & MPEG-4
Maximum Frame Rate	15 fps at 1920x1920 30 fps at 1920x1080 In all compression modes
Maximum Streams	3 simultaneous streams
S/N Ratio	Above 50 dB
Dynamic Range	Above 60 dB
Video Streaming	Adjustable resolution, quality and bitrate Configurable video cropping for bandwidth saving
Image Settings	Time stamp, text overlay, flip & mirror, scheduled profile settings, configurable brightness/contrast/saturation/sharpness, white balance, exposure control, gain, backlight compensation, privacy masks, pixel calculator, 3D-Noise reduction
<b>Audio</b>	
Audio Capability	Audio input/output (full duplex)
Compression	AAC, G.711, G.726
Interface	Built-in microphone External microphone input External line output
Effective Range	5 meters
<b>Network</b>	
Users	Live viewing for up to 10 clients
Protocols	IPv4, IPv6, TCP/IP, HTTP, HTTPS, UPnP, RTSP/RTP/RTCP, IGMP, SMTP, FTP, DHCP, NTP, DNS, DDNS, PPPoE, CoS, QoS, SNMP, 802.1X, UDP, ICMP
Interface	10Base-T/100 BaseTX Ethernet (RJ-45)
ONVIF	Supported, specification available at <a href="http://www.onvif.org">www.onvif.org</a>

<b>Intelligent Video</b>	
Video Motion Detection	Five-window video motion detection
<b>Alarm and Event</b>	
Alarm Triggers	Video motion detection, manual trigger, digital input, periodical trigger, system boot, recording notification, camera tampering detection
Alarm Events	Event notification using digital output, HTTP, SMTP, FTP and NAS server File upload via HTTP, SMTP, FTP and NAS server
<b>General</b>	
Connectors	RJ-45 cable connector for Network/PoE connection Audio input Audio output DC 12V power input Digital input*1 Digital output*1
LED Indicator	System power and status indicator
Power Input	DC 12V IEEE 802.3at PoE Class 4
Power Consumption	Max. 22 W (DC 12V) Max. 23 W (PoE+)
Dimensions	Ø160 x 39 mm (FE8181) Ø160 x 51 mm (FE8181V)
Weight	589 g (FE8181) 794 g (FE8181V)
Casing	Vandal-proof IK10-rated metal housing (FE8181V) Weather-proof IP66-rated housing (FE8181)
Safety Certifications	CE, LVD, FCC Class A (FE8181V), FCC Class B (FE8181), VCCI, C-Tick, UL, EN50155(FE8181V)
Operating Temperature	Starting Temperature: -25°C ~ 50°C (-13°F ~ 122°F) Working Temperature: -40°C ~ 50°C (-40°F ~ 122°F)
Warranty	36 months
<b>System Requirements</b>	
Operating System	Microsoft Windows 7/Vista/XP/2000
Web Browser	Mozilla Firefox 7-10 (streaming only) Internet Explorer 7.x, 8.x, 9.x, 10.x
Other Players	VLC: 1.1.11 or above Quicktime: 7 or above
<b>Included Accessories</b>	
CD	User's manual, quick installation guide, Installation Wizard 2, ST7501 32-channel, VAST CMS (90-day free trial version), Calibration Tool
Others	Quick installation guide, warranty card, alignment sticker, desiccant bag, screw driver, screws pack, I/O cable (sold separately in US and Canada), mounting bracket, software CD

## Dimensions



## Compatible Accessories

### Mounting Kits



**AM-51A**  
Dome adapter



**AM-116**  
Pendant pipe



**AM-114**  
Pendant head



**AM-515**  
NPT adapter (for AM-518)

### Power Adapter



**AA-221**  
DC 12V Power Adapter

### PoE Kits



**AP3001**  
PoE Plus Injector



**AW-FED-0500**  
4-port Unmanaged  
PoE Switch

All specifications are subject to change without notice. Copyright © VIVOTEK INC. All rights reserved.

Distributed by:

**use-IP**  
www.use-ip.co.uk  
01304 827609

**VIVOTEK**  
www.vivotek.com

**VIVOTEK INC.**  
6F, No.192, Lien-Cheng Rd., Chung-Ho,  
New Taipei City, 235, Taiwan, R.O.C.  
T: +886-2-82455282 F: +886-2-82455532  
E: sales@vivotek.com

**VIVOTEK USA**  
2050 Ringwood Avenue,  
San Jose, CA 95131  
T: 408-773-8686 F: 408-773-8298  
E: salesusa@vivotek.com

**VIVOTEK Europe**  
Randstad 22-133, 1316BW Almere,  
The Netherlands  
T: +31(0)36-5298-434  
E: saleseurope@vivotek.com

Ver 1.6